



FONASBA

**50TH FONASBA  
ANNIVERSARY**

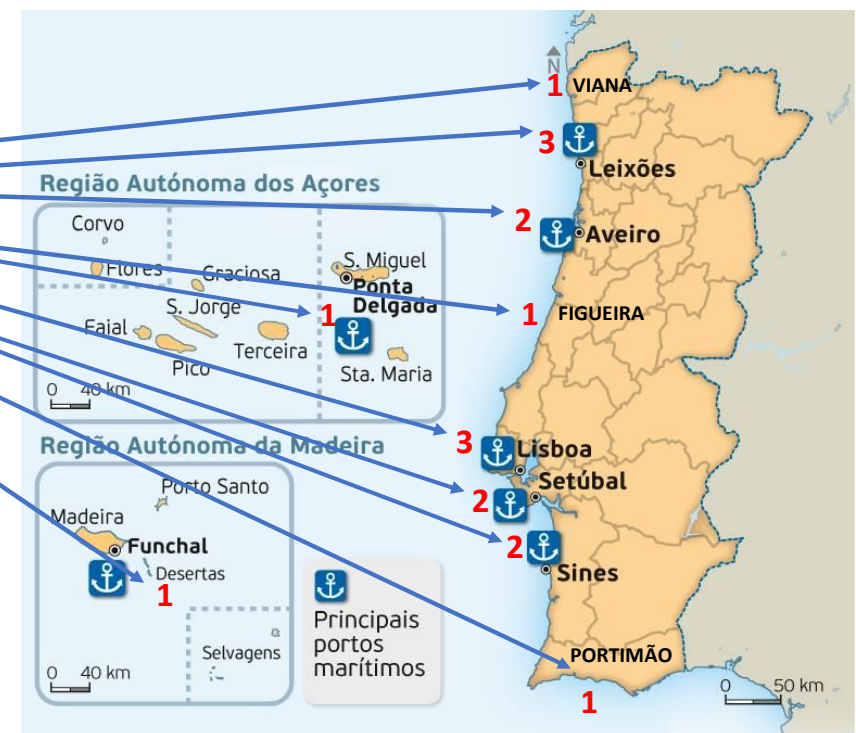
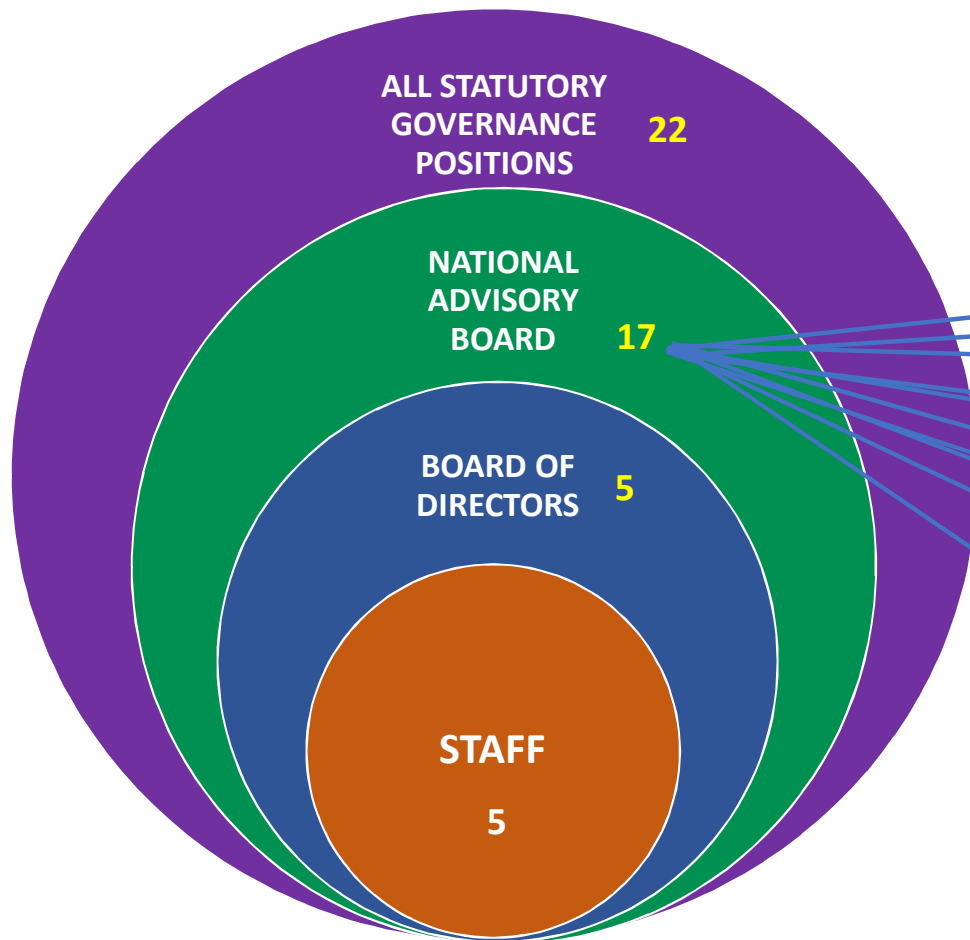


**AGEPOR**



- PROTECT THE SHIP AGENTS INTERESTS
- PROTECT THE SHIP AGENT PROFESSION
- REPRESENT PORTUGUESE SHIP AGENTS IN PORTUGAL AND WORLDWIDE
- ASSIST PRINCIPALS THROUGH THEIR AGENTS
- PROMOTE EDUCATION AND TRAINING
- ORGANIZE CONGRESSES / WORKSHOPS and other INDUSTRY EVENTS
- ASSIST THE REGULATOR AND GOVERNMENT
- ASSIST PORTS AND ALL AUTHORITIES RELATED TO VESSEL / CARGO / CREW / PASSENGERS
- PROVIDE LEGAL ASSISTANCE / INFO TO MEMBERS
- PROVIDE CUSTOMS ASSISTANCE TO MEMBERS
- ASSIST THE DEVELOPMENT OF THE PORT AND LOGISTIC SINGLE WINDOW
- REPRESENT THE AGENTS AT LOCAL PORT COMMUNITIES ORGANIZATIONS

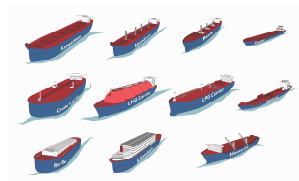
# A STRONG REPRESENTATION OF MEMBERS A STRONG PERMANENT ORGANIZATION



## FINANCIAL CLOUT / INCOME DISTRIBUTION



23,3%



62,4%



7,35%



6,95%



14,6%

---

100%

# FINANCIAL CLOUT / INCOME DISTRIBUTION



## I - MEMBERS COSTS

<b>a) Fixed fees (monthly)</b>	<b>Euros</b>
1 license	110,00
2 to 4 licenses	220,00
5 or more licenses	330,00
<b>b) Entrance fee (for new members)</b>	<b>1436,00</b>

## II - VESSEL COSTS

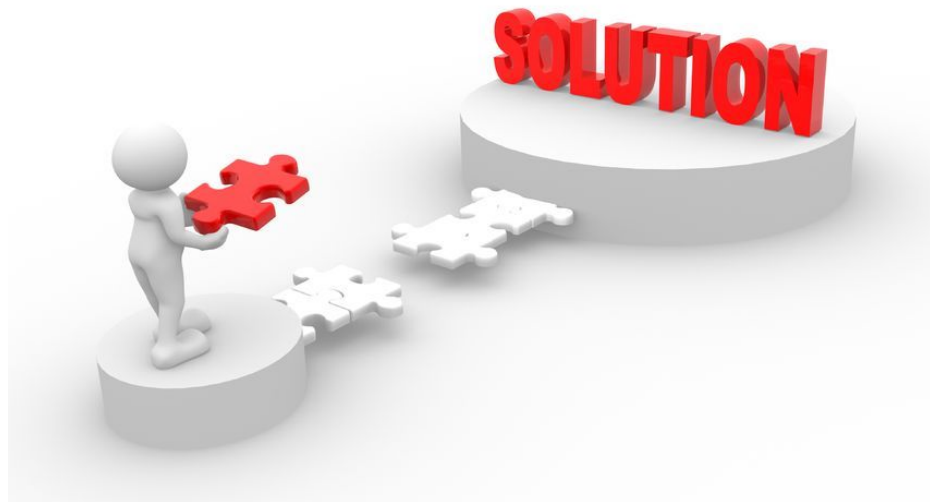
### a) Variable fees

<b>Vessel's fee (per call)</b>	<b>Euros</b>
1) Vessels up to 5000 GT	19,10
2) Vessels from 5001 to 20000 GT	4,40x1000GT
3) Vessels from 20001 to 50000 GT	85,00
4) Vessels from 50001 GT to 100000 GT	95,00
5) Vessels over 100001 GT	100,00

### b) Insurance guarantee (Dec-Law nr. 264/2012)

Per agent/vessel/call	13,50€/Vessel
-----------------------	---------------

## PORT DUES LIABILITY





## MAJOR EVENTS – Making our policy ideas known



O novo ciclo  
dos Portos  
Portugueses



AGEPÓR

**IX Congresso**  
AGEPÓR – Associação dos Agentes de Navegação de Portugal  
"O Novo Ciclo dos Portos Portugueses"  
9 e 10 de outubro | Douro

---

**Programa**

**9 de outubro**  
*Apresentação e Moderação Fernando Gonçalves  
(Diretor do Transportes & Negócios)*

10.30H Embarque Cais de Gaia – Navio Independência  
11.15H Boas Vindas e Abertura  
*Rui d'Orey*  
12.00H O projeto do Douro  
*Raquel Maia (APOL)*  
12.30H Ports and Inland Waterways  
*Dimstrios Theologitis (DGMOVE)*  
13.00H Almoço  
15.30H Os Cruzeiros  
*Alexis Papatthanassis (Cruise Management and e-tourism)  
Professor Bremerhaven University*  
17.00H Coffee Break  
18.00H Desembarque e transporte para os Hotéis  
19.45H Transporte dos Hotéis para o jantar  
20.15H Jantar na Quinta da Pacheca  
23.00H Transporte para os Hotéis

**10 de outubro**  
*Apresentação e Moderação José Monteiro Limão  
(Diretor da Transportes em Revista)*

08.30H Transporte dos Hotéis para o Museu do Douro  
09.00H Portugal e o mundo - Perspetivas macroeconómicas  
*Vitor Bento*  
10.00H Shipping Global  
*Martin Dixon (Drewry)*  
11.00H Coffee Break  
11.30H Painel "O Novo Ciclo dos Portos Portugueses"  
*Estudo das Comunidades Portuárias elaborado pela PWC;  
Vieira dos Santos (C.P.Leixões) e Miguel Marques (PWC)*  
13.00H Almoço  
15.00H "O Novo Ciclo dos Portos Portugueses"  
*Lidia Sequeira (Presidente da APP)*  
15.30H Painel "O Novo Ciclo dos Portos Portugueses"  
*A Estratégia para o Futuro:  
Lidia Sequeira (APP), João Carvalho (AMT),  
Pedro Galvão (CPC), Rui d'Orey (AGEPÓR)*  
17.00H Coffee Break  
17.30H Conclusões e Recomendações  
*António Belmar da Costa (AGEPÓR)*  
18.00H Agradecimento  
*Rui d'Orey*  
18.10H Encerramento  
*Sr.ª Ministra do Mar (a confirmar)*  
18.20H Transporte para os Hotéis  
19.45H Transporte para o jantar  
20.15H Jantar de encerramento no Hotel Six Senses

**11 de outubro**

08.30H Transporte dos Hotéis para Estação de comboio da Régua  
09.00H Partida de comboio Régua-Porto





THE KEY TO SUCCESS IS TO FOCUS ON GOALS NOT ON OBSTACLES

