



European Commission
Taxation and Customs Union

Customs

1- Implementation of the security amendment

2- MCC/MCCIP





European Commission
Taxation and Customs Union

1- Implementation of the Security amendment





European Commission
Taxation and Customs Union

Implementation of the security amendment

- End of transition period: 1/1/2011
- Grace period for penalties to be granted ad hoc by MS to traders that can prove their technical difficulties to link to national system: ENS - 1/7/2011
- System technically stable





European Commission
Taxation and Customs Union

Import Control System Phase 1 (ICS)



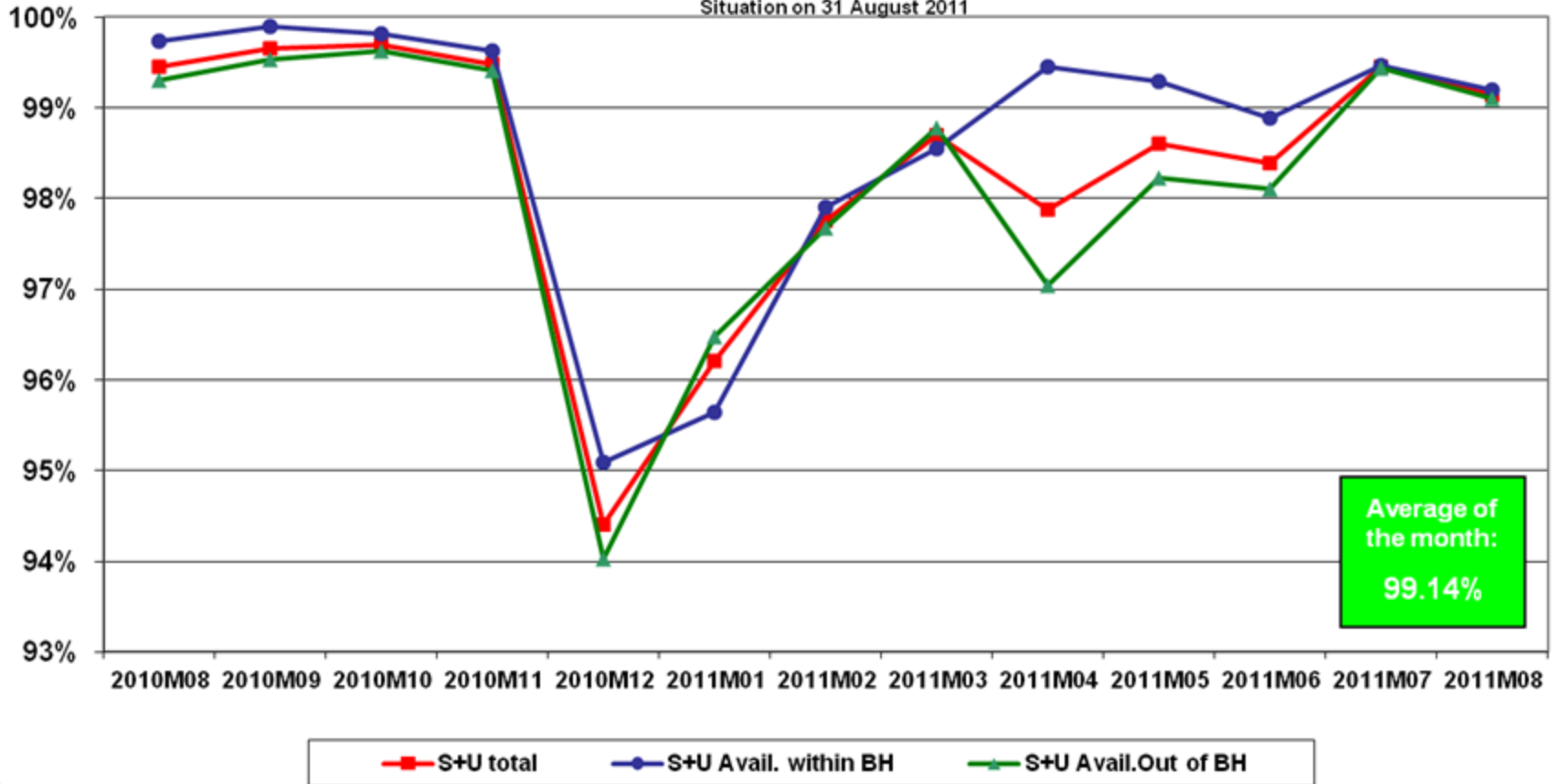


ICS – Availability report (August 2011)

European Commission
Taxation and Customs Union

ICS - Global availability rates in the last 13 month (%)

Situation on 31 August 2011



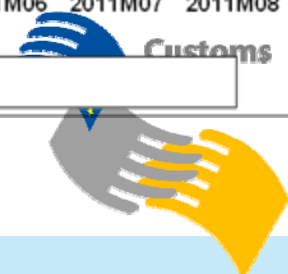
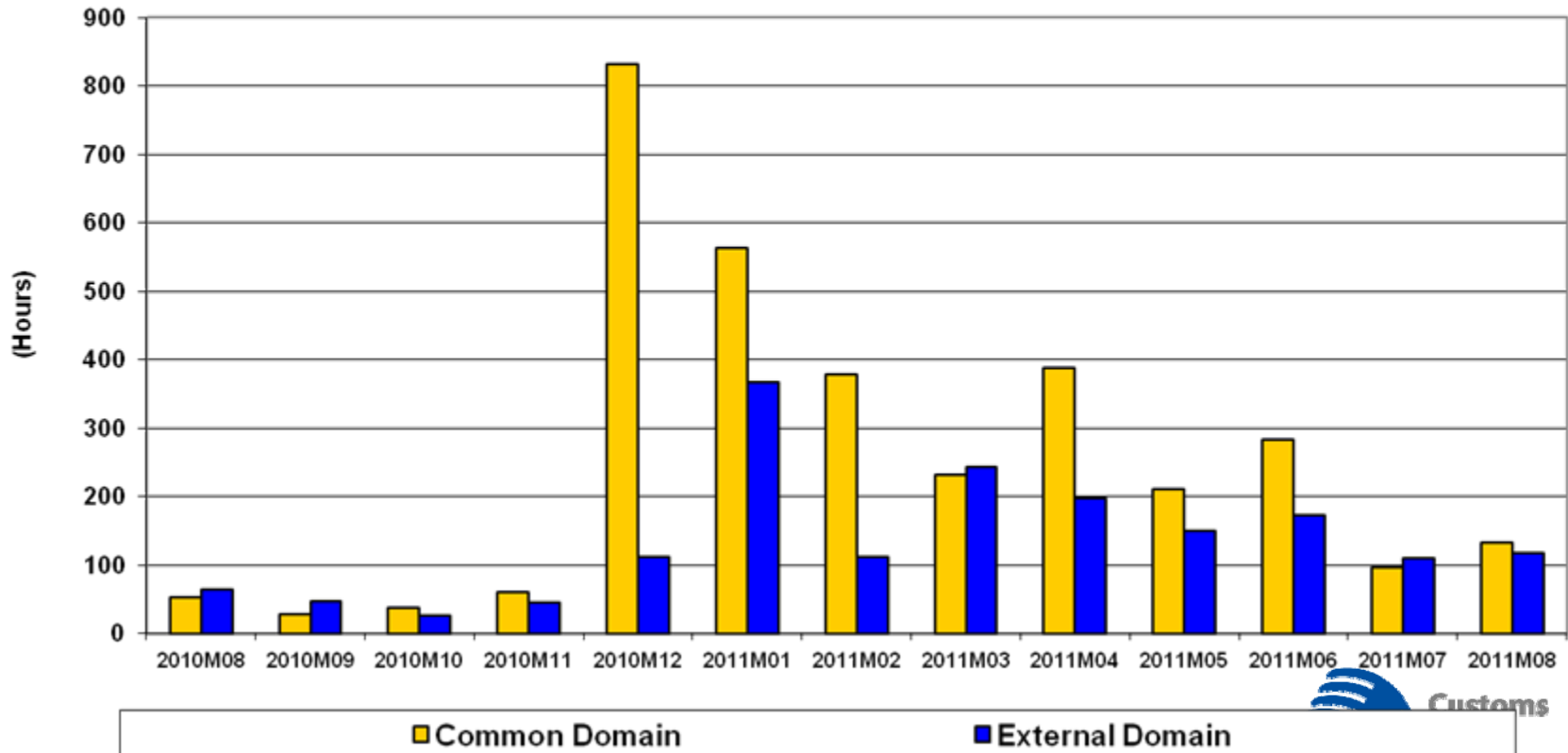


ICS – Availability report (August 2011)

European Commission
Taxation and Customs Union

ICS - Hours of unavailabilities per month and per domain,
in the last 13 months

Situation on 31 August 2011

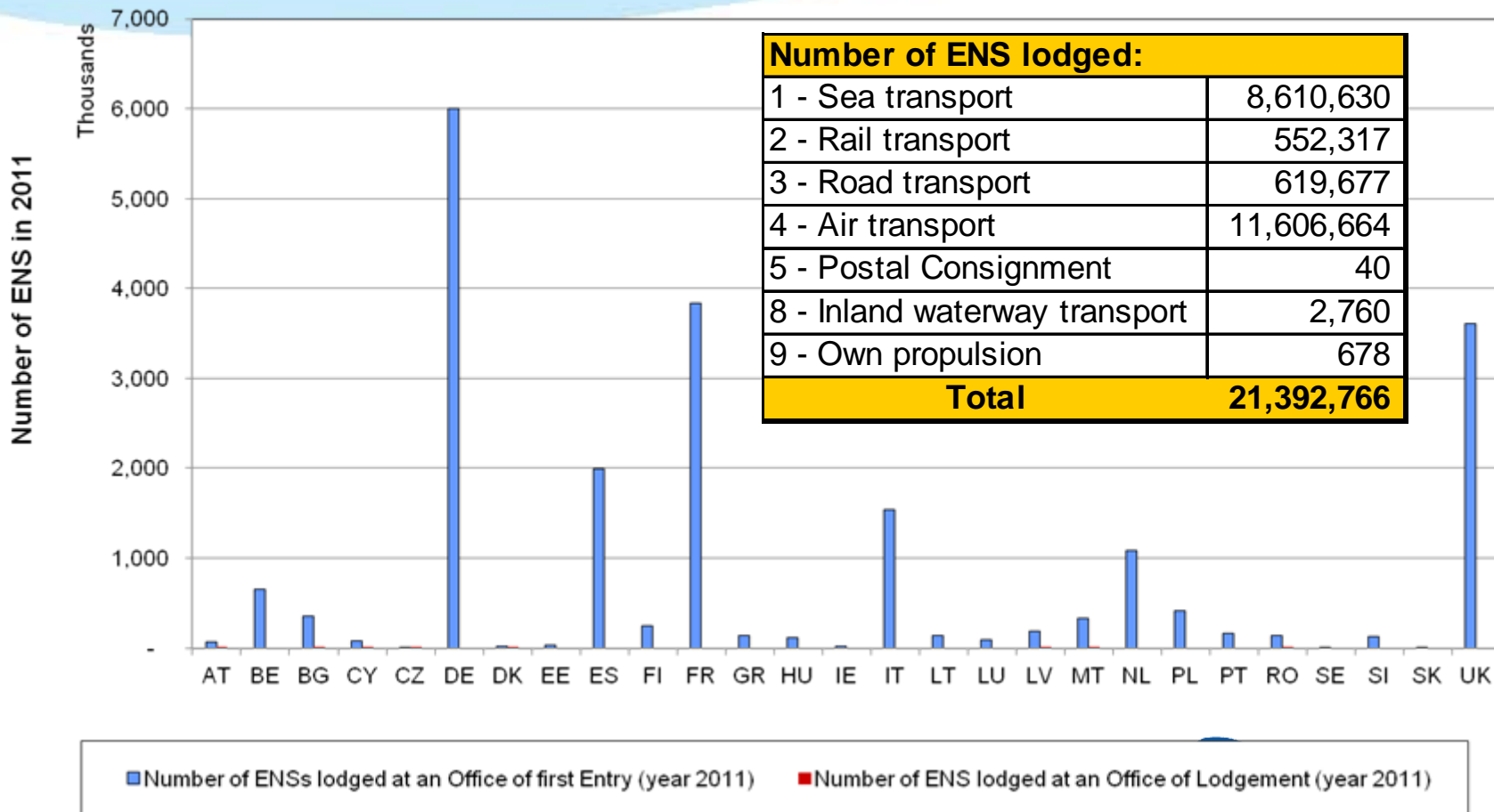


ICS – Number of ENS lodged between 01.01.2011 and 31.08.2011



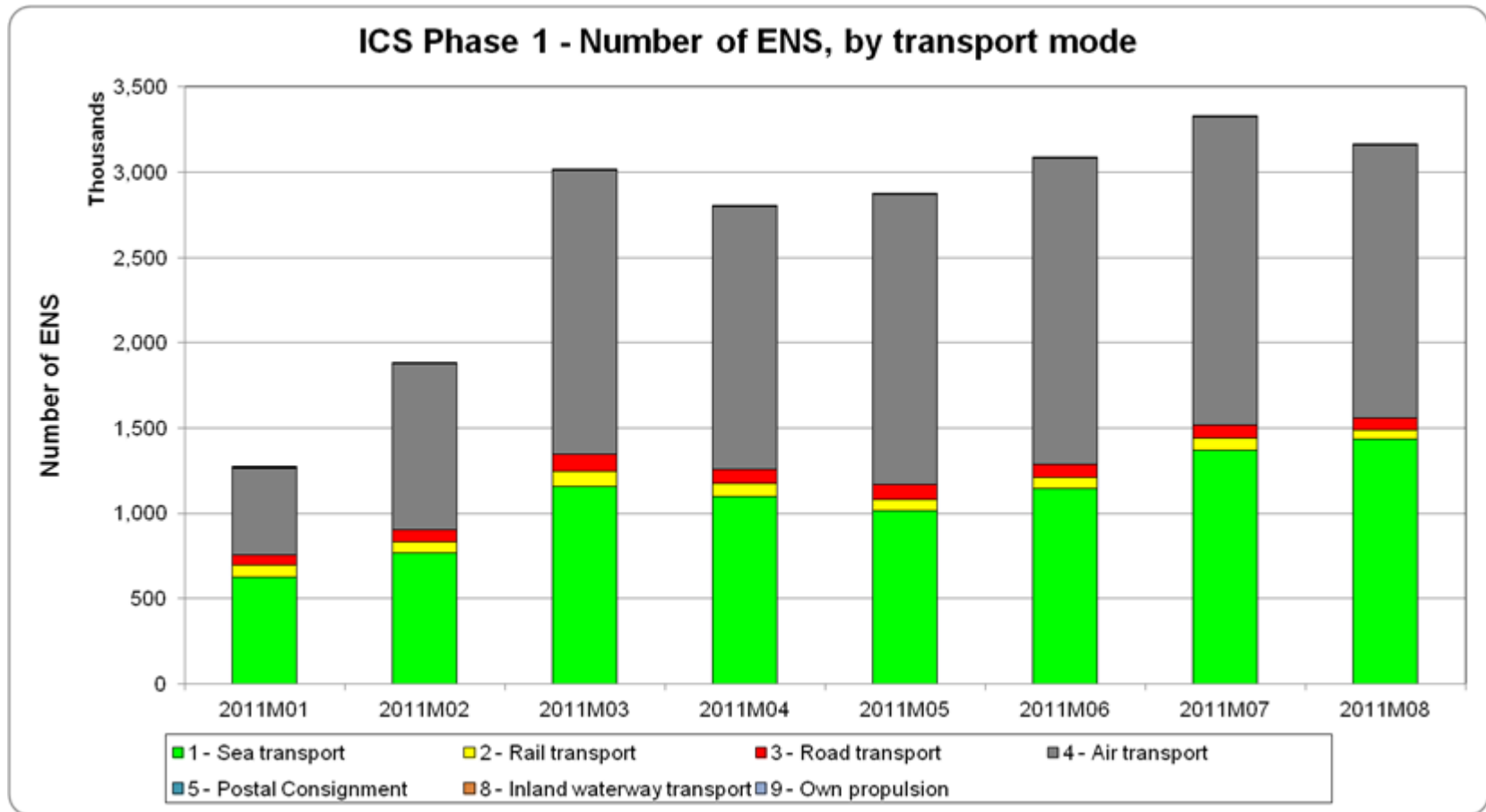
European Commission
Taxation and Customs Union

Number of ENS lodged per Member State in 2011





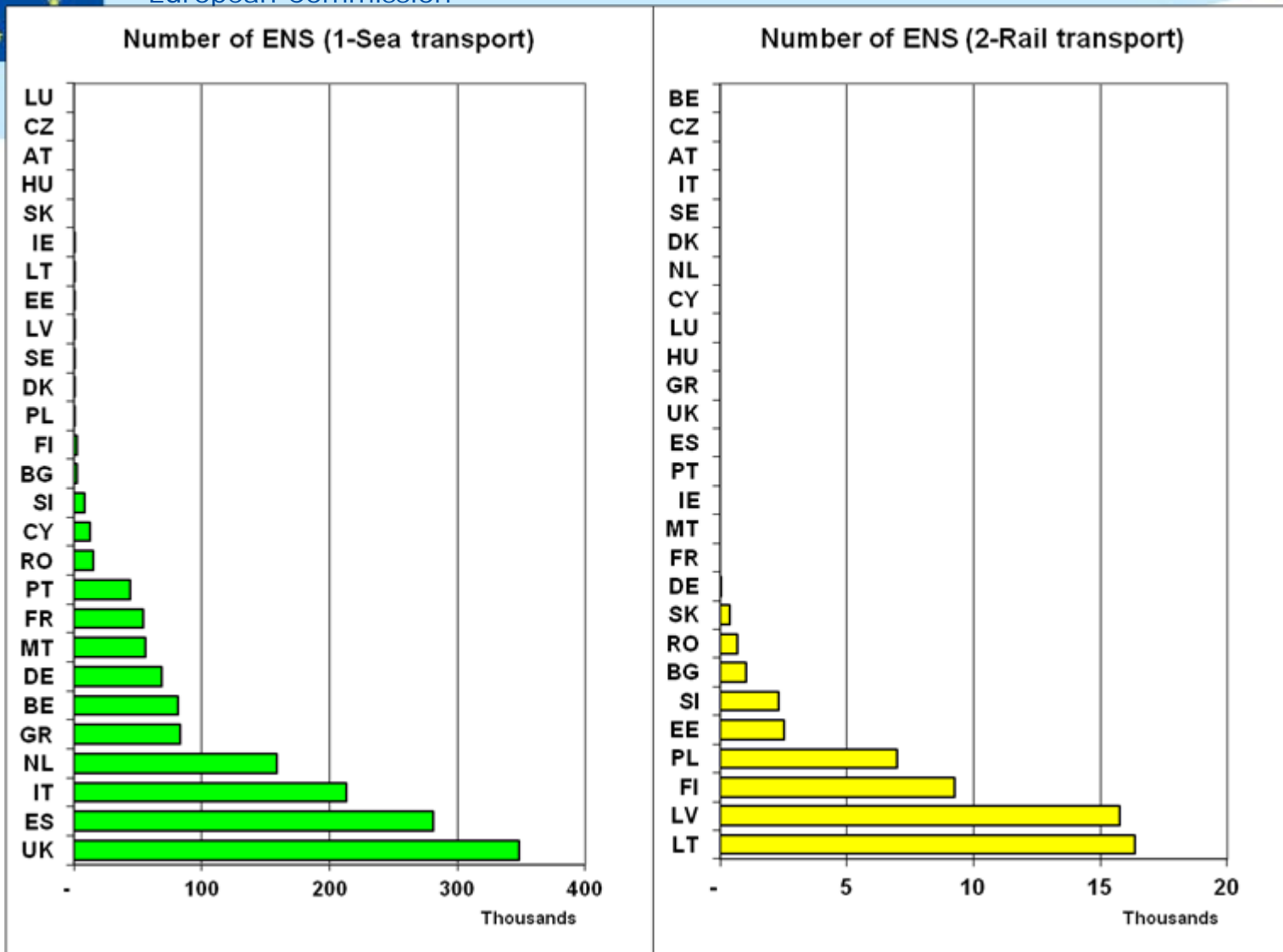
ICS – Number of Entry summary declarations lodged per mode of transport between 01.01.2011 and 31.08.2011



ICS – Number of Entry summary declarations lodged per mode of transport and per MS in August 2011 (1)



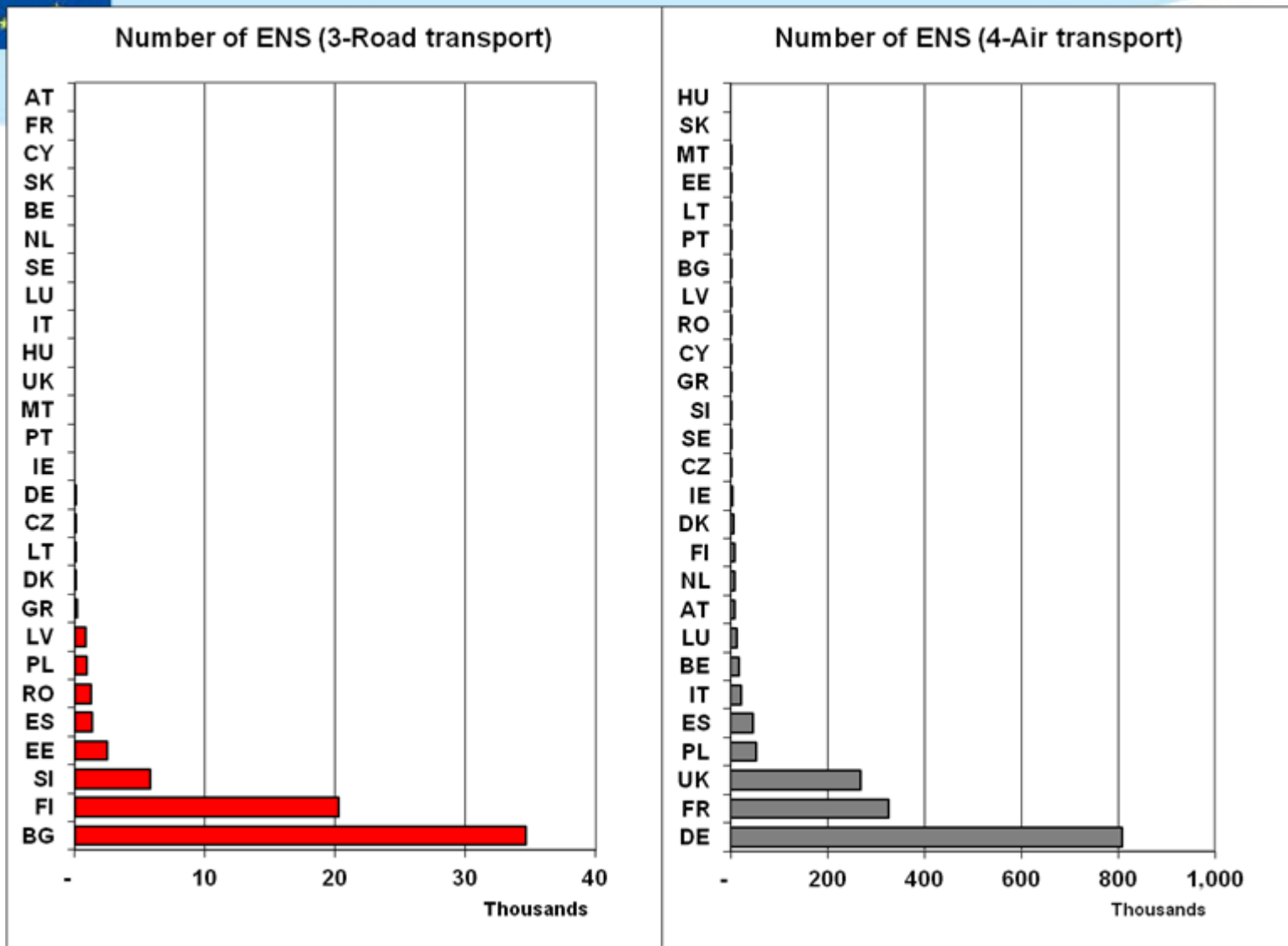
European Commission



ICS – Number of Entry summary declarations lodged per mode of transport and per MS in August 2011 (2)



European Commission





European Commission
Taxation and Customs Union

Verification of the lodgement of Entry summary declaration

- The moment of presentation of goods is the last moment when an Entry summary declaration can be provided but such cases should be really exceptional and the time limits stipulated by the legislation have to be kept.
- A systematic verification if Entry summary declarations were lodged for all the goods entering the EU territory to be implemented by and performed by all the Member States.





Quality of Entry summary declarations' data

- National administrations indicate low quality of the content of some data elements provided by traders. E.g.:
 - No commodity code is provided in Entry summary declaration combined with a description of goods containing only general statements such as: “Consolidated, packed, etc.”

Improved results for subsequent automated risk analysis can only be obtained by changing the status of the commodity code from optional to mandatory (at least 4 positions of the combined nomenclature)
 - Several Member States reported also low quality of the content in relation to the ‘consignee’ and ‘consignor’ data. *Significant proportion of FF to FF data* (e.g. air +65%, maritime +55%) instead of real consignors/consignees prevents effective electronic risk analysis





European Commission
Taxation and Customs Union

Quality of Entry summary declarations' data

- For issues regulated by legislation: National administrations should cooperate with traders, to motivate them to improve the quality of Entry Summary declarations.
Minimum quality standards are required before validation!
- Issues not covered by legal obligations: need to be considered for changing legislation but evaluation to be done first





Example: Description of goods ~ HS code – the current content of ENSs

■ Commodity code

- NL (May 2011):
 - Sea transport: presented in 58,36% (from this 51% for 4 positions, 40% 6 positions)
 - Air transport: presented in 0,02%
- IT (April 2011): presented in 62,25% (from this 77% for 4 positions, 23% 6 positions)
- BE (May 2011):

Mode of transport	GIVES CC	NUMBER OF EO	GOODS ITEMS	Pct
1	always	16	15241	10,3%
1	never	29	1148	0,8%
1	sometimes	16	131035	88,9%
4	always	1	64	0,3%
4	never	9	19070	99,7%
4	sometimes	0	0	0,0%





European Commission
Taxation and Customs Union

Export Control System Phase 2 (ECS)

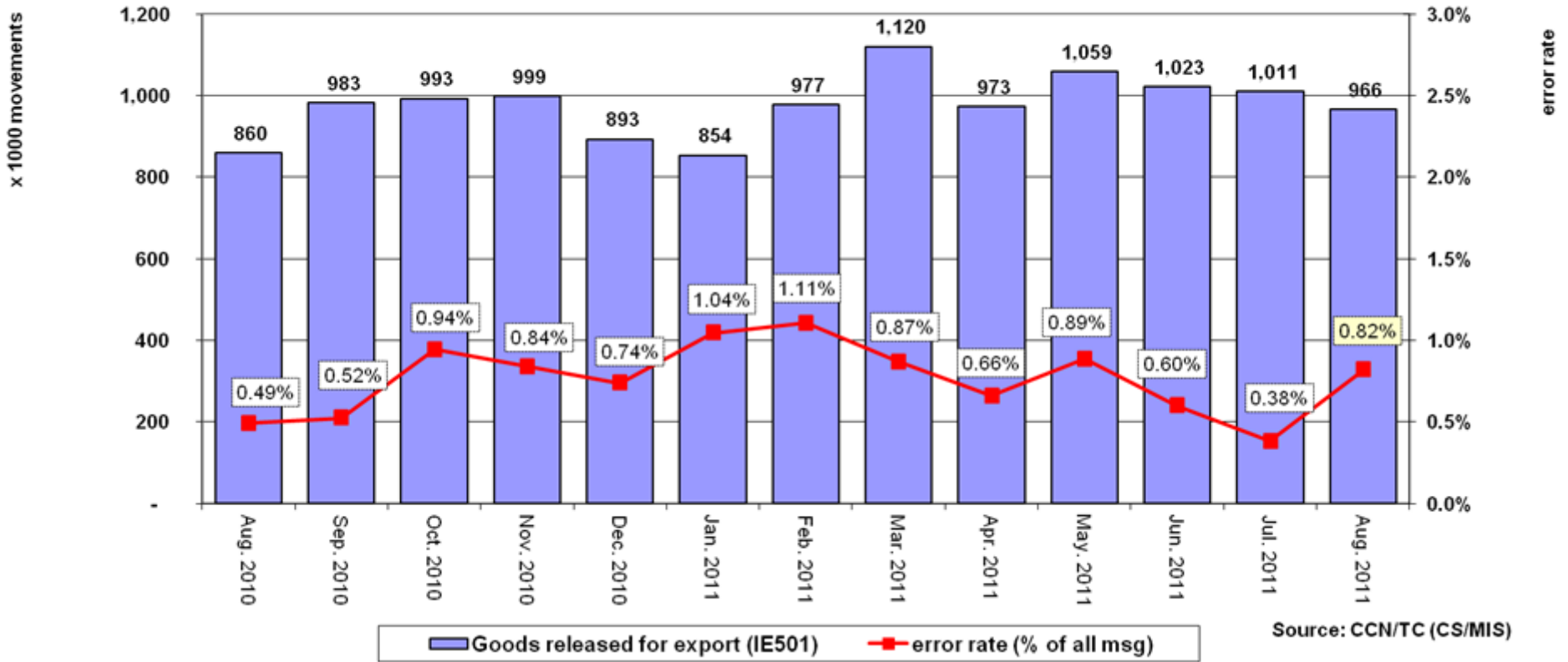




ECS – Evolution of operations

European Commission
Taxation and Customs Union

ECS - Evolution of operations last 13 months

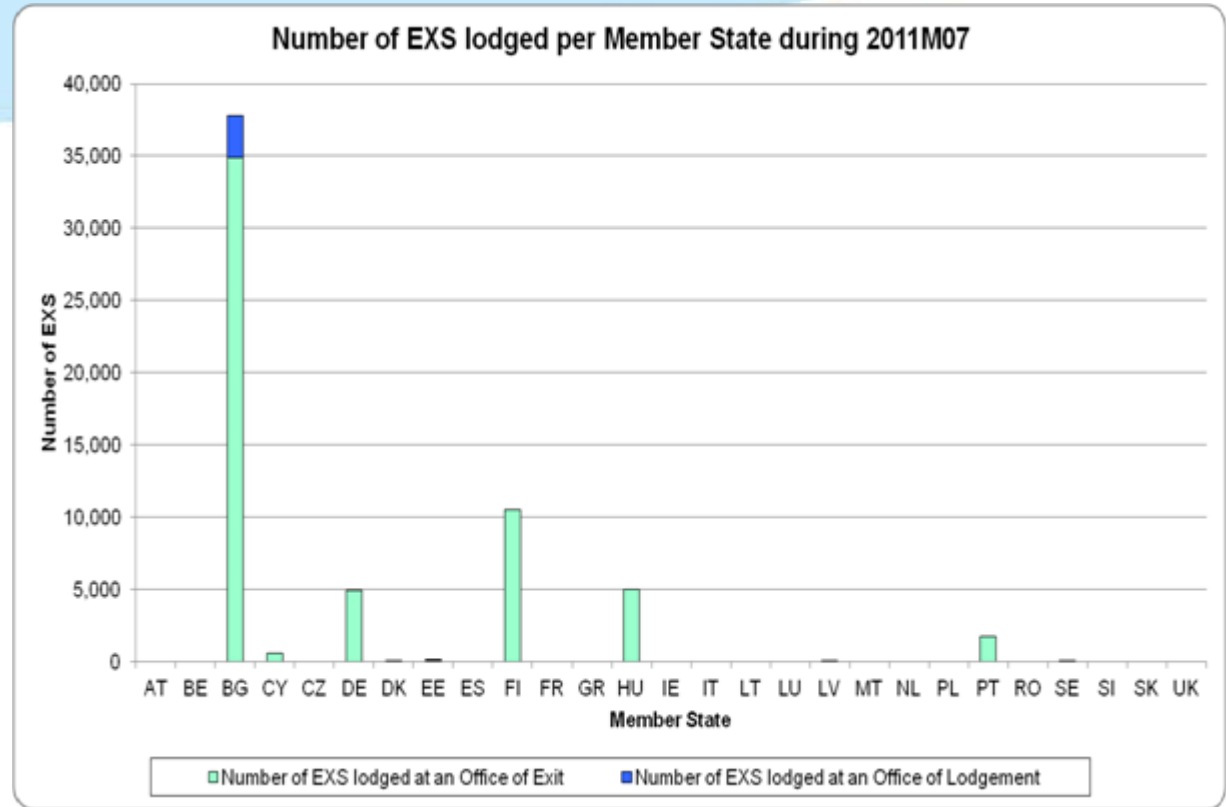




Number of EXS lodged in July 2011, per MS (ED)

European Commission
Taxation and Customs Union

	Number of EXS lodged in July 2011	
	at COoExit	at COoLdgt
AT	0	0
BE	NA	NA
BG	34872	2897
CY	522	0
CZ	NA	NA
DE	4906	0
DK	0	68
EE	51	51
ES	NA	NA
FI	10530	0
FR	0	0
GR	NA	NA
HU	5007	0
IE	0	0
IT	NA	NA
LT	NA	NA
LU	NA	NA
LV	20	0
MT	NA	NA
NL	NA	NA
PL	NA	NA
PT	1703	0
RO	NA	NA
SE	3	16
SI	NA	NA
SK	NA	NA
UK	NA	NA



~ 58.000 EXS
in July 2011 (data from 13 MS only)

~ 3.300.000 ENS
in July 2011 (27 MS)



June 2011: EXS can be lodged in 24 MS

MS	Specifications provided to Traders	Possibility for traders to send EXS (msg IE615) (since ...)
AT	YES	YES - 01/09/2009
BE	YES	YES
BG	YES	YES - 01/07/2009
CY	YES	YES (end 2010)
CZ	YES	YES - 01/07/2009
DE	YES	YES - 27/06/2010
DK	YES	YES
EE	YES	YES - 01/07/2009
EL	YES	2011 Q4
ES	YES	YES - 15/12/2010
FI	YES	YES - 14/12/2009
FR	YES	YES - 31/12/2010 for EDI (DTI later)
HU	YES	YES - 29/10/2009
IE	NO	NO
IT	YES	YES - 31/12/2010
LT	YES	YES - 30/04/2010
LU	YES	To be confirmed
LV	YES	YES - 01/07/2009
MT	YES	YES - 31/10/2010
NL	YES	YES - 31/01/2010
PL	YES	YES - 08/11/2010
PT	YES	YES - 01/06/2010
RO	NO	YES for EXS (but not as IE615)
SE	YES	YES
SI	YES	YES - 22/12/2010
SK	YES	YES
UK	YES	YES - 01/07/2009

1) 24 MS ready

2) No business case in IE

3) Implementation delayed in EL (2011Q4) and LU (tbc)

➔ Implementation date to be confirmed.





Reporting/ Comments

- Since the start of ECS (January 2007), 93 millions messages were exchanged on the Common Domain (33.4 mio. movements).
- In September, the number of movements released per week increased compared to August (~235,000)
- Higher average error rate in August (0.82%) and September (0.80%) compared to June (0.59%) and July (0.38%!).
- The closure of movements by CO of Export based on alternative proofs of exit remains an important source of error message.
- Major issues: COL issue in AT (solved?) and gross mass in IE501 sent by DE;
- The global availability of the ECS was 99.1% in August, above the limit.





European Commission
Taxation and Customs Union

Economic Operators' System (EOS)





EOS-EORI: Status on 27.04.2011

- 2.718.000 EORI records
- 175.000 EORI request via web service (*Mar 2010*)
- 51.000 new EORI records (*Mar 2010*)

- 8.900 AEO Applications in total
- 5.900 AEO Certificates in total
- 459 mandatory consultation started
- 74 prejudicial information sent in total



European Commission
Taxation and Customs Union

2- Modernised Customs Code and its implementing provisions (MCC/MCCIP)





European Commission
Taxation and Customs Union

MCC Recast

Amendment of MCC to align it on the Lisbon Treaty correct it and postpone its application : MCC Recast



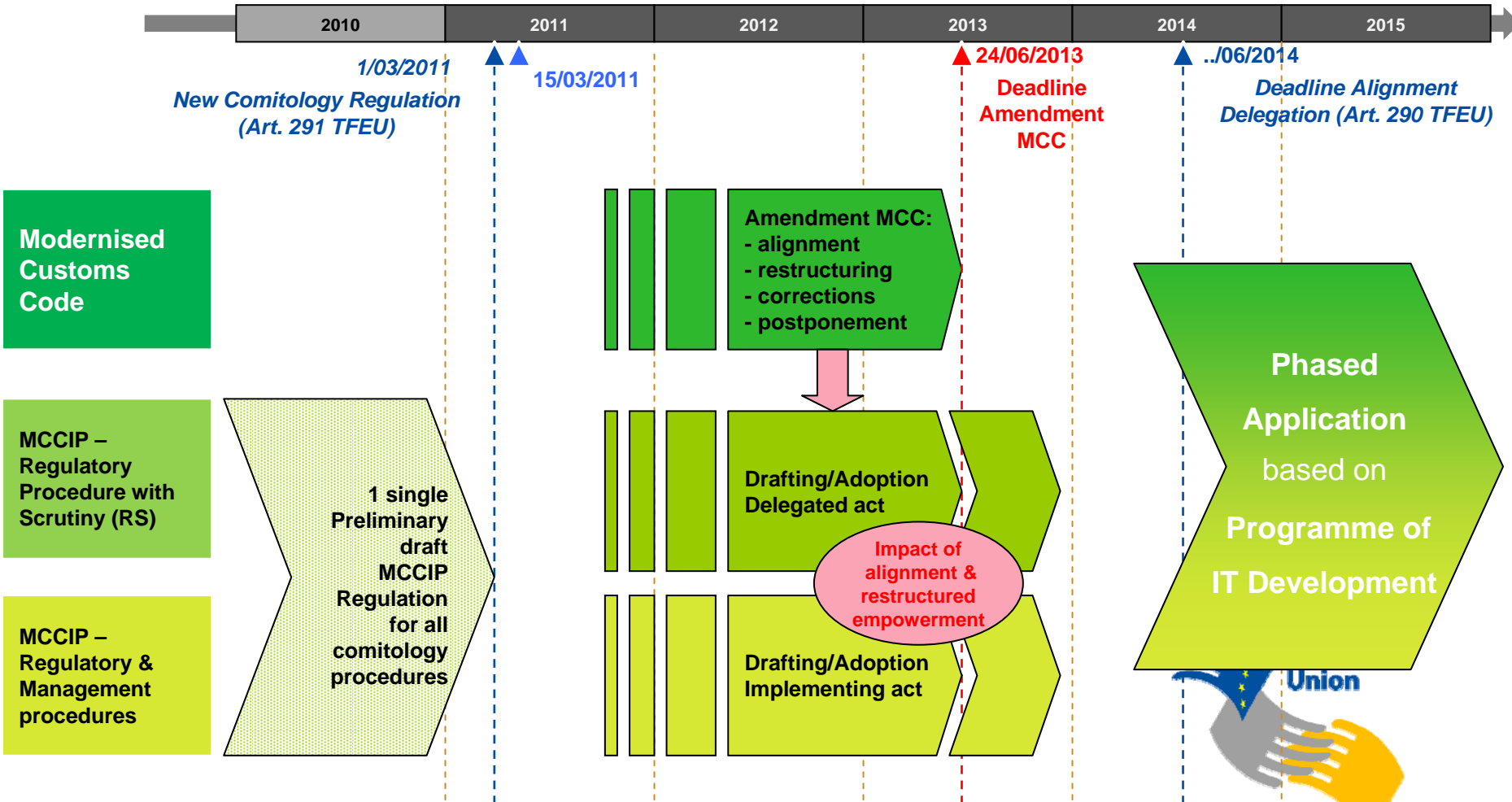


- Finalisation of the current work on BPM
- Submission (before end of 2011) to the EP and Council of a proposal to amend the MCC before 24.6.2013 in order:
 - To introduce new procedures for adoption and restructure MCC in order to allow a split of MCCIP between delegated and implementing acts
 - To correct, where appropriate, some provisions
 - To fix new deadline(s), depending on the processes to be computerised or conditions for application
- Such postponement should be supported by a comprehensive programme of IT development
- Production of guidelines





Legal Planning





Where are we?

- Expert groups MS and Traders - no further expert meeting
- Inclusion of the corrections in the draft proposal for MCC recast
- Finalisation of draft proposal with corrections, alignment and postponement: October
- Information of stakeholders about progress in various forums (MS: MCC ad hoc HLSG & CUWP Council; trade: TCG)
- Proposal to be submitted by COM to EP & Council mid-December



European Commission
Taxation and Customs Union

New Computerised Transit System Phase 4 (NCTS)

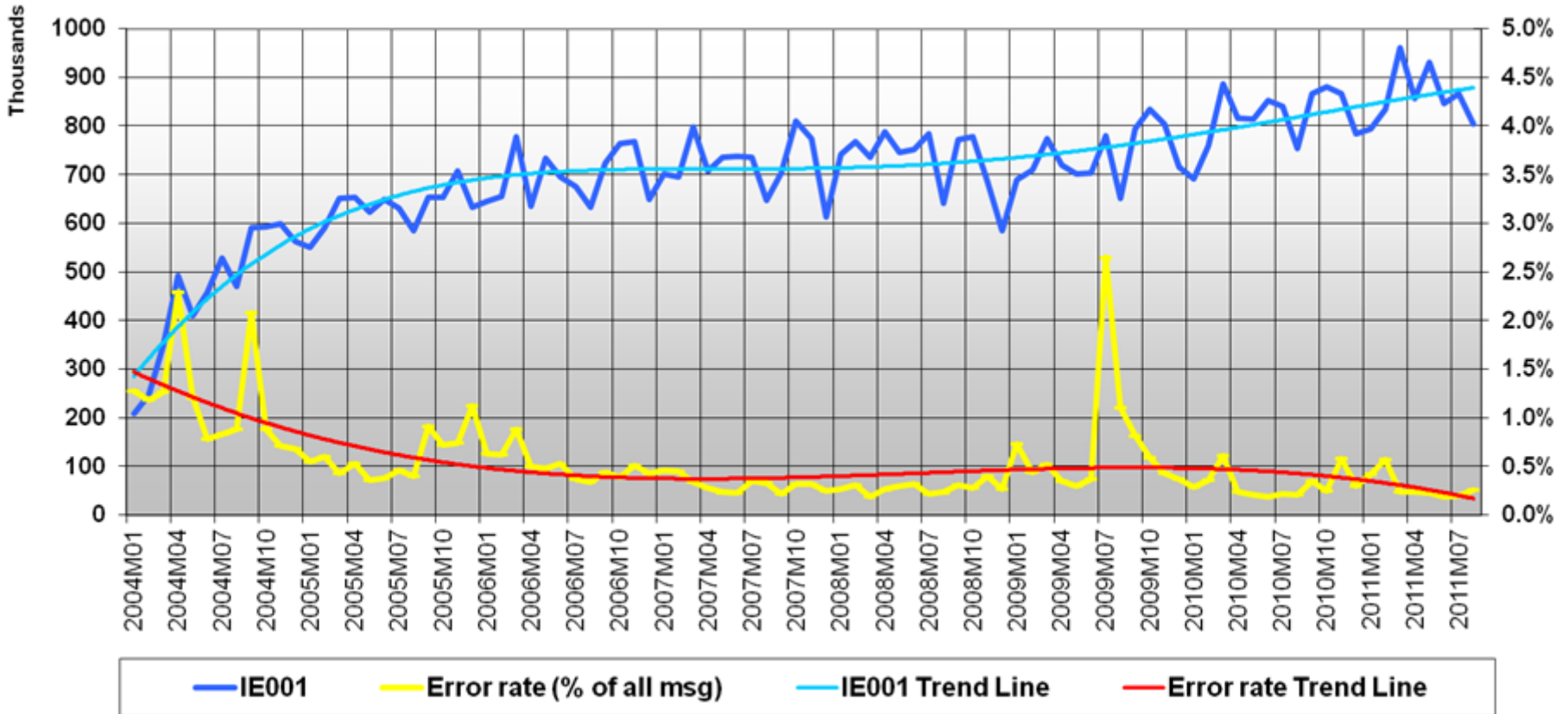




NCTS – Evolution of operations

European Commission

NCTS - Volume of movements and percentage of error messages (2004-2011)



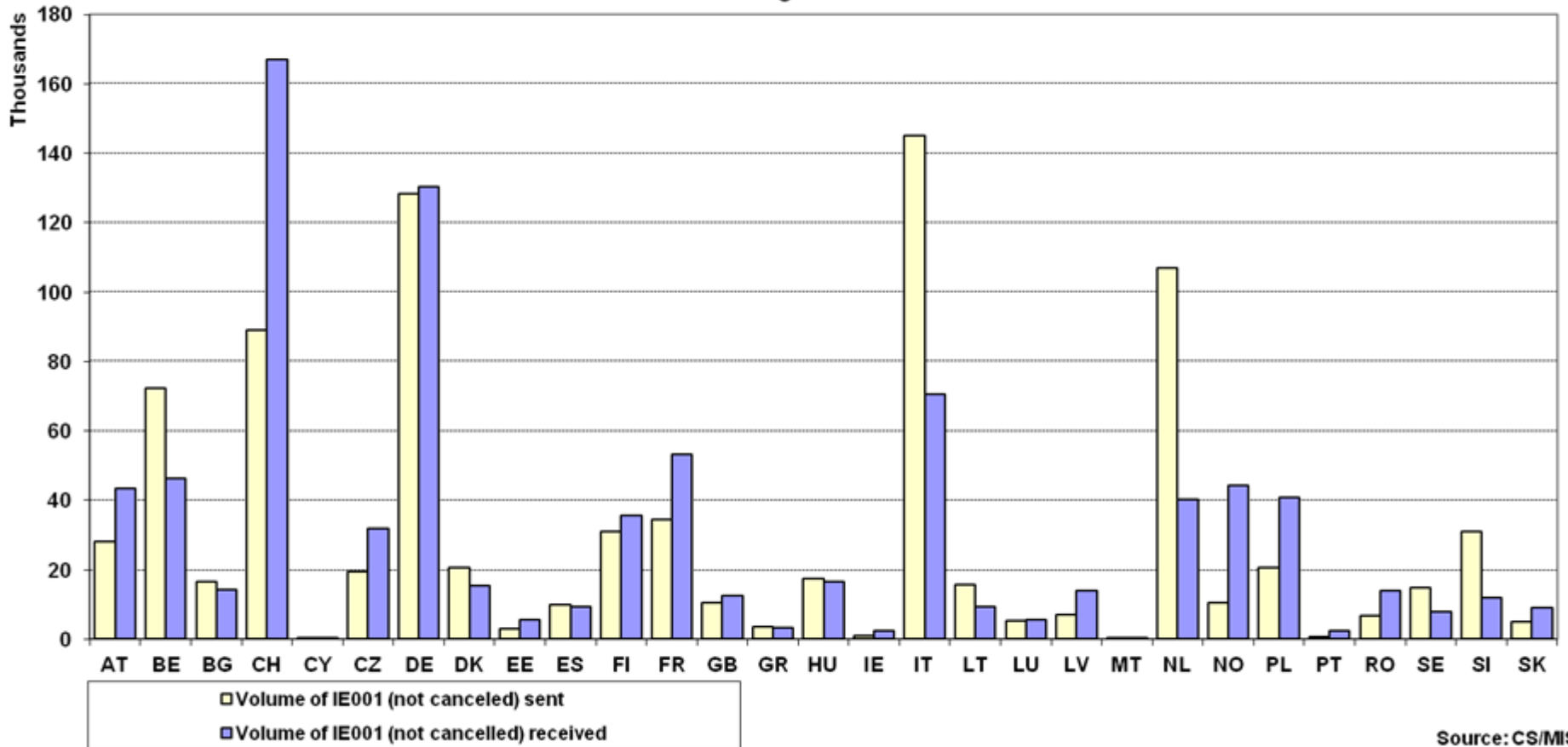
NCTS – Volume per departure & destination



European Commission
Taxation and Customs Union

NCTS - IE001 sent and received during the period

Period: August 2011



Source: CS/MIS



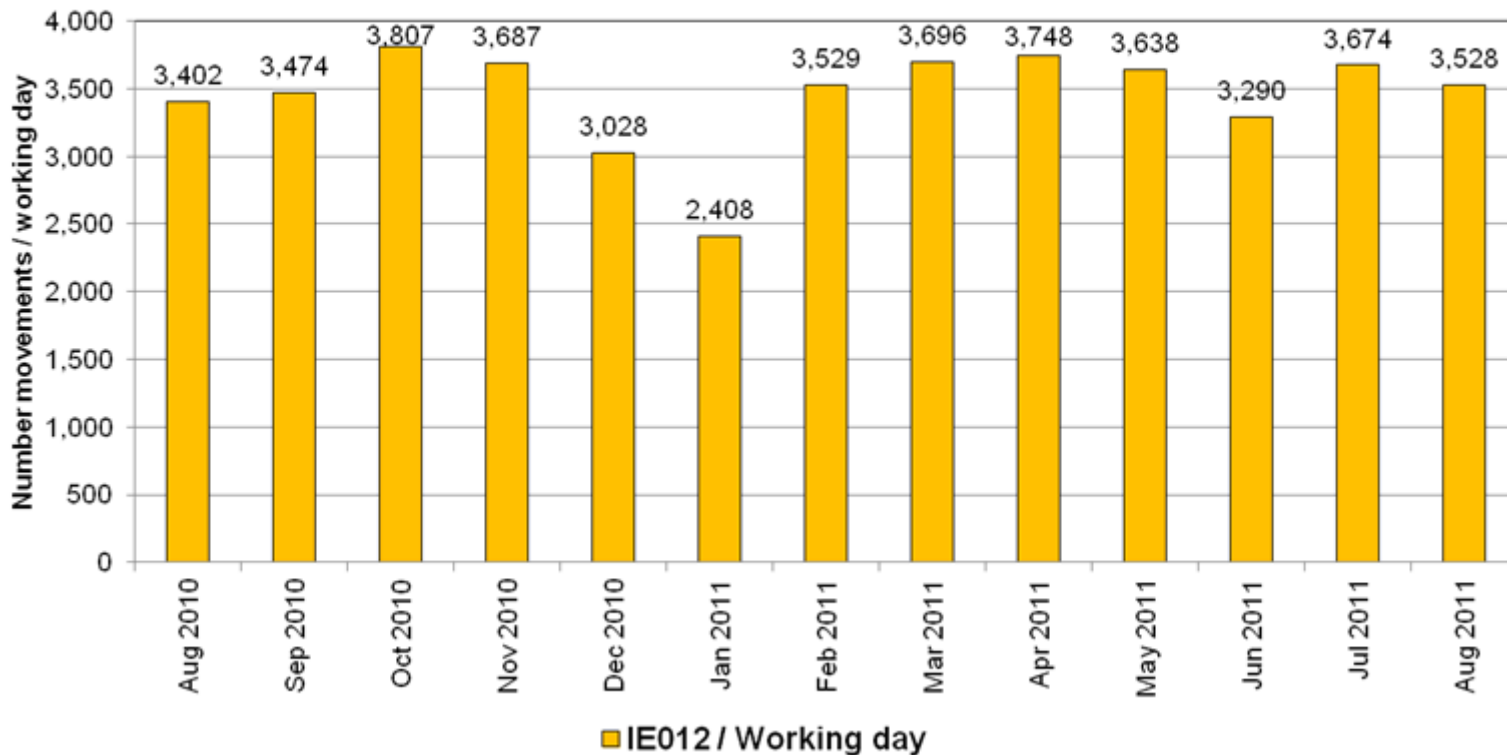
NCTS TIR Russia



European Commission
Directorate-General for Trade and Customs Policy

- **IE012 sent by 13 MS participants**
- **Quality of operations: Excellent !**
- **Stability of volume per working day (about 3.500 msg/wd)**

Average volume of movements (IE012)
from participating EU MS to Russia per working day



Customs
Union



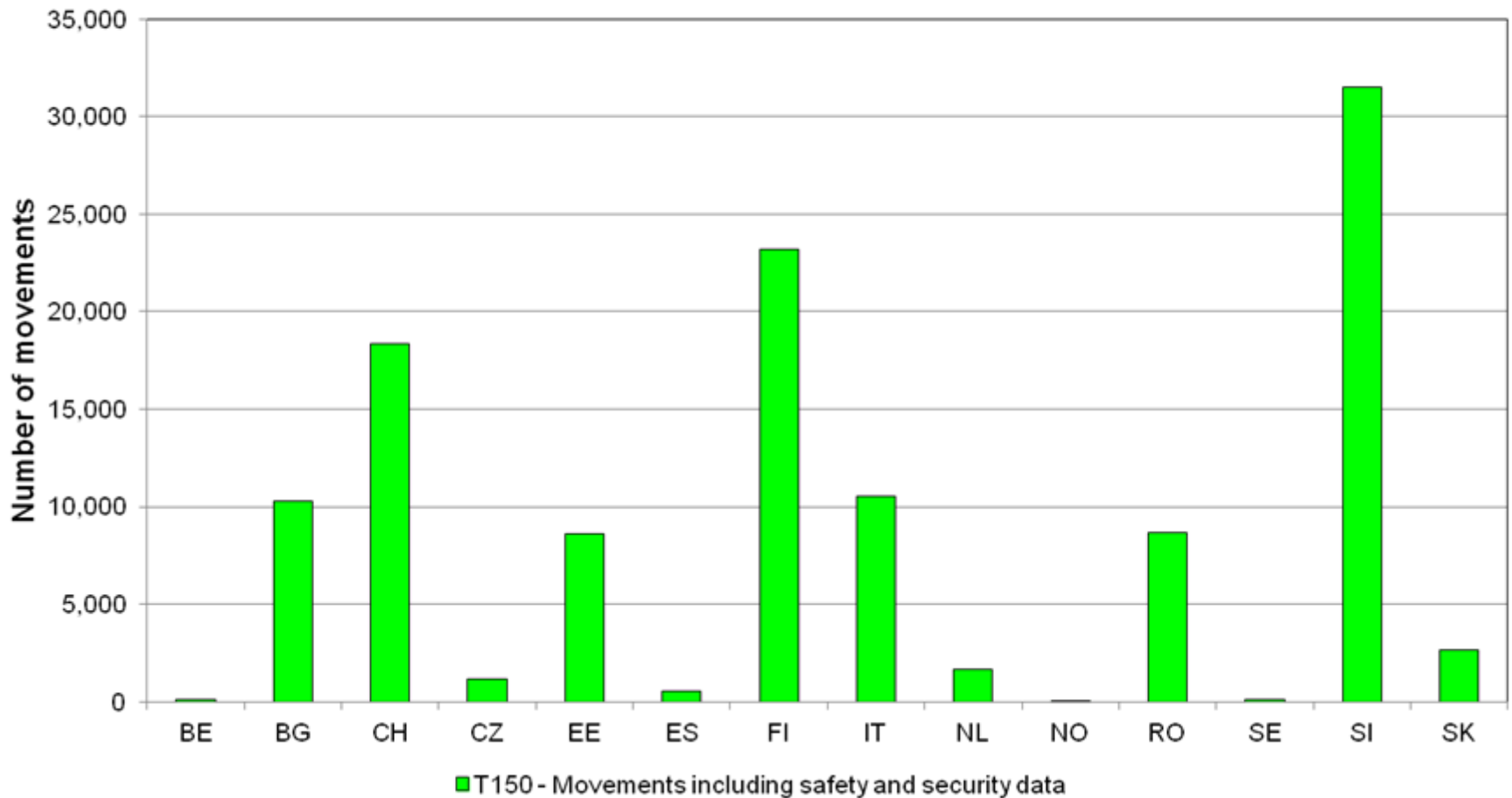
NCTS – Usage of security data – August 2011



European Commission

IE411 sent by the National Administrations

NCTS - Movements including safety and security data





TS Reporting/ Comments

- Since 2004, 318 millions messages were exchanged on the Common Domain (65 mio. movements);
- In September, the number of movements released per week increased compared to August (~200,000);
- Low average error rate in September (0.22%), stable compared to the previous months;
- Main issue was rejection of IE118 from CH (issue solved).
- Very high availability rate at 99.5% in August.

